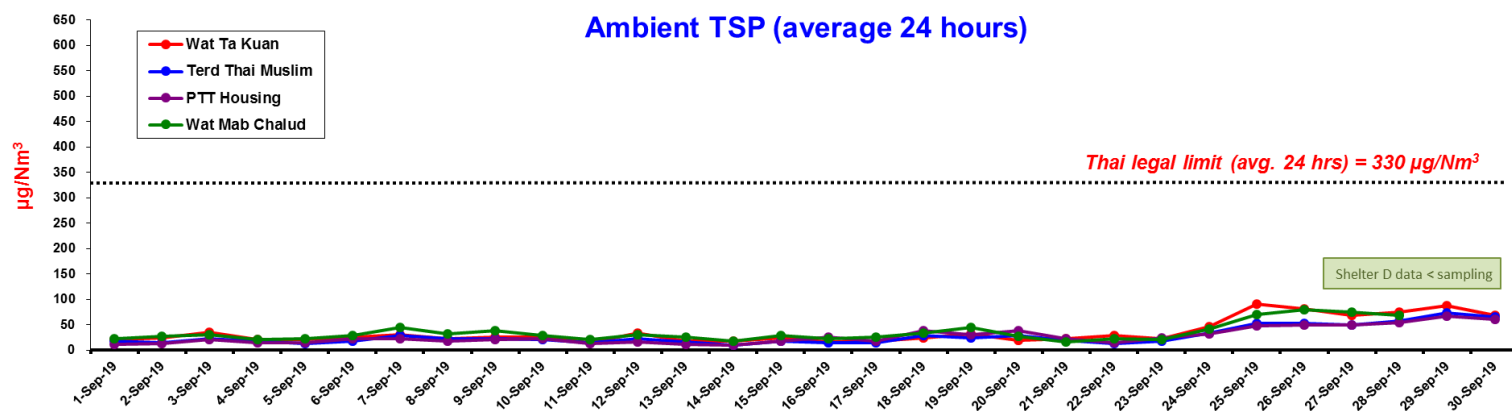


Ambient Air Quality

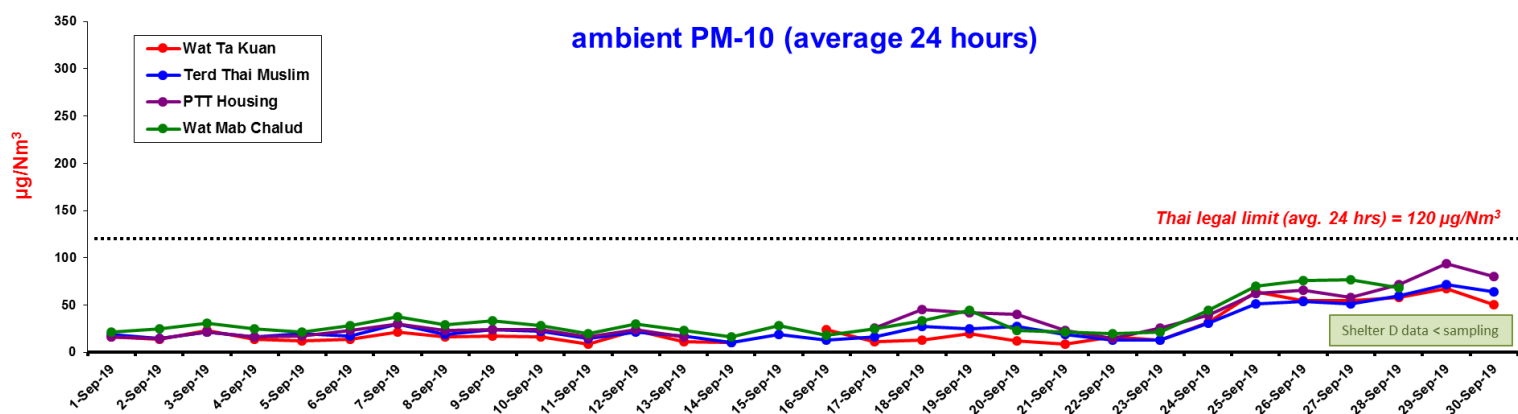
● Total Suspended Particulate Matter (TSP)

Ambient TSP (average 24 hours)



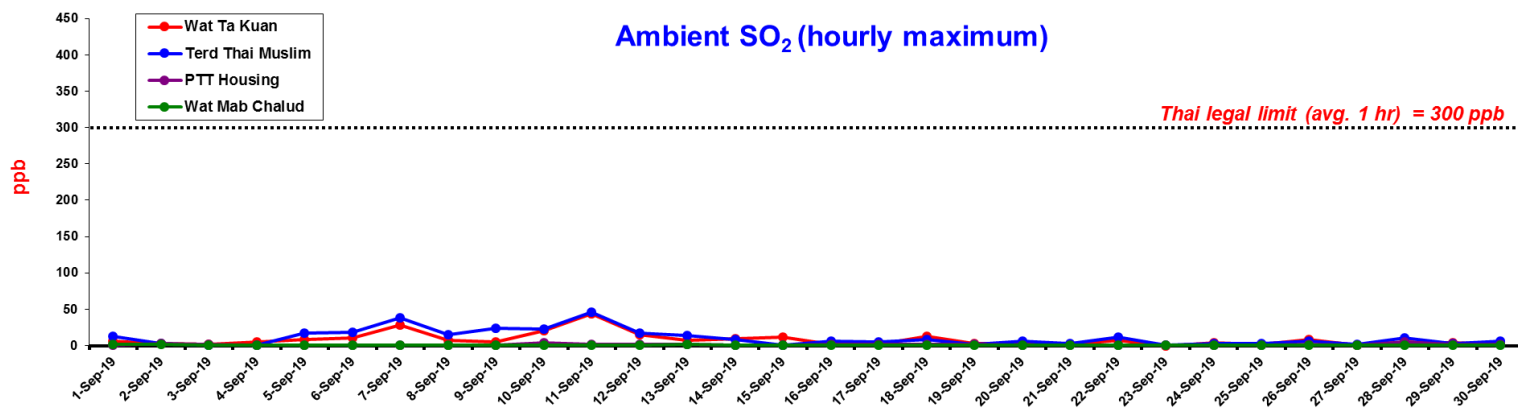
● Particulate Matter having an aerodynamic diameter of less than or equal to 10 μm (PM10)

ambient PM-10 (average 24 hours)



● Sulfur Dioxide (SO₂)

Ambient SO₂ (hourly maximum)



● Nitrogen Dioxide (NO₂)

